

Heated Floor Bird Nesting Box

Dan Vollmer

Acadiana Bird Club
January 21, 2018

Modified for website



Materials Required

- ▶ About ½ of 4 x 8 ft. sheet of ½ inch plywood
- ▶ ¼ inch plywood (11 x 23 inches),
- ▶ 1 to 1 ¼ inch screws (course threaded sheetrock screws) for box assembly
- ▶ 1 inch screws for the runners
- ▶ 4 stainless steel bolts with nuts for the slots,
- ▶ Heating pad , 12" x 24" long or shorter, (see figure next slide)
- ▶ Metal plate (11 ½ x 23 ½ inches),
- ▶ Nesting material (aspen shavings),
- ▶ 7, ¾" square x 4 inch long pieces of wood for the inside ladder.
- ▶ A ¾ – 1" diameter x 5" long dowel for the perch and the drill bit to drill the hole for the dowel. A pair of hinges and a latch for the door.
- ▶ Optional timer to control the on/off time for the heating (see next slide).



Recommend Heating Pad and Optional Timer

Sunbeam King-Size Heating Pad with UltraHeat Technology and Moist/Dry Heat, Blue [Sunbeam](#)



6,448 customer reviews | 306 answered questions

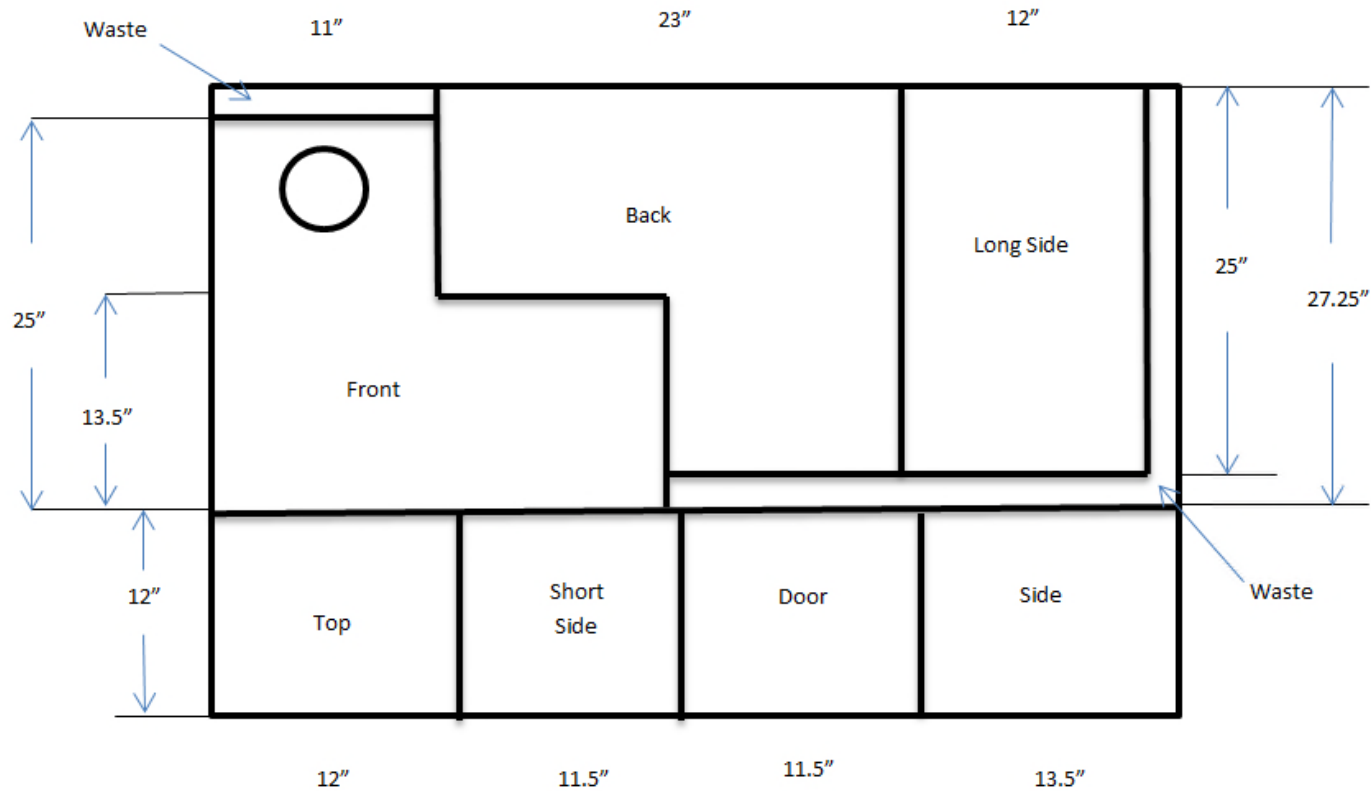


About the product

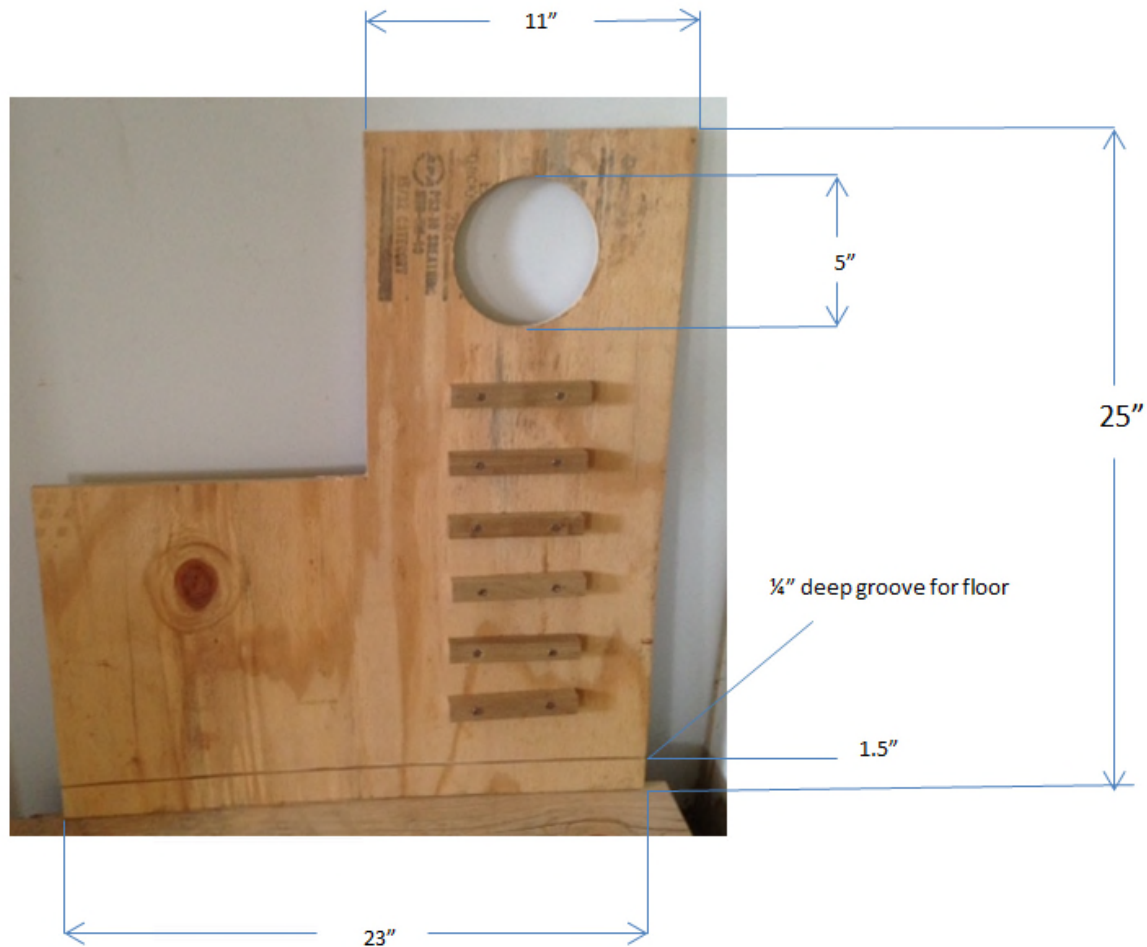
- King-size 12" x 24" electric heating pad features UltraHeat Technology for even, consistent heat; use it with moist or dry heat
- Features 3 heat settings so you get the intensity you need, and a slide controller designed to be easy for arthritis sufferers to use
- Soft, machine-washable cover
- Extra-long, 9-foot power cord
- 5-year limited warranty



Cutting Diagram for Plywood



Front Section



Assembly



Assembly



Assembly

- ▶ Slots are designed to press the ¼ inch plywood firmly against the heating pad using the screws to hold it.
- ▶ Protect the power cord from the bird.



The Big Test



Paper accepted for publication in AFA Watchbird,
Volume XLV, Number 1 & 2, 2018